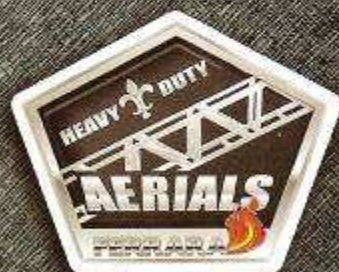


STRONG ARM

FERRARA



FERRARA FIRE APPARATUS, INCORPORATED



A Revolutionary Firefighting Vehicle

Ein revolutionäres Löschfahrzeug • Vehicule révolutionnaire de lutte contre les incendies
Un veicolo antincendio dalle caratteristiche rivoluzionarie • Un vehículo contra incendios revolucionario

Every year firefighters across the country are seriously injured or killed, while protecting the lives and property of others. Fire related injuries and deaths are on the rise, due to the extreme hazards associated with the dangerous job of firefighting.

At Ferrara Fire Apparatus, Inc. we constantly strive to engineer, design and develop emergency fire and rescue vehicles, that provide maximum firefighter safety, while providing state-of-the-art technology combined with premium materials and unsurpassed quality and workmanship in every emergency firefighting vehicle we manufacture, to insure we stay focused on what's really important, ...You the firefighters.

Ferrara Fire Apparatus, Inc. is extremely proud to have joined forces with JLG/Gradall, the world's leading producer of mobile aerial work platforms and the leading producer of tele-handlers and telescopic hydraulic excavators.

The **STRONG ARM** is a revolutionary new firefighting vehicle developed, engineered and designed exclusively for heavy duty continuous use in the extreme adverse conditions that firefighters across the world are faced with each day.

The **STRONG ARM** has been engineered to insure quick, simple, easy operation while offering practical performance and new safer, more efficient methods of combating man's oldest enemy, Fire!

Ferrara Fire Apparatus continues "Leading the Way" by providing innovative products and services to enhance firefighter safety. We accept our role as the industry's most progressive and innovative manufacturer. We embrace the opportunity to design safer more efficient emergency fire and rescue vehicles and we accept the challenge to be the best!!

Versatility

Vielseitigkeit, Wendigkeit und pure Kraft • Polyvalence, mobilité et puissance



RESCUE

RETTUNG
SAUVETAGE
SALVATAGGIO
RESCATE



FOAM APPLICATIONS

Class "A" and "B"

SCHAUMANWENDUNGEN FÜR BRANDKLASSEN "A" UND "B"

UTILISATIONS DE MOUSSE CLASSES « A » ET « B »
APPLICAZIONI DI SCHIUMOGENI CLASSI "A" E "B"
APLICACIONES DE ESPUMA DE CLASES "A" Y "B"



DANGER FREE VENTILATION

GEFAHRLOSE ENTLÜFTUNG
VENTILATION SANS DANGER
VENTILAZIONE IN SICUREZZA
VENTILACIÓN LIBRE DE RIESGOS



CONTROLLED DEMOLITION

KONTROLLIERTE ZERSTÖRUNG
DÉMOLITION CONTRÔLÉE
DEMOLIZIONE CONTROLLATA
DEMOLICIÓN CONTROLADA



5700 LPM
5700 L/MIN BR
EXTINCTION 57
SPEGNIMENTO
SUPRESIÓN DE

SEA CONTAINER

SCHIFFSCONTAINER
CONTENEUR MAR
CONTAINER MAR
CONTENEDOR M

Mobility & Raw Power

force brute • Versatilità, mobilità e forza allo stato puro • Versatilidad, movilidad y potencia bruta

HEAVY DUTY

AERIALS



FORCIBLE ENTRY

GEWALTSAMES EINDRINGEN
ENTRÉE DE FORCE
INGRESSO DI FORZA
ENTRADA POR FUERZA

RADIO REMOTE CONTROL

FUNKFERNSTEUERUNG
RADIOCOMMANDE
RADIOCOMANDO
CONTROL A DISTANCIA POR RADIO



5TH MAN PATENT # 6,840,330

PATENT-NR. 6,840,330
BREVET N° 6,840,330
BREVETTO N. 6,840,330
PATENTE N° 6 840 330



SUPPRESSION

WASSERDRÜCKUNG
L/MIN.
LPM



327 TO 2767 KG LIFTING CAPACITY

327 BIS 2767 kg TRAGFÄHIGKEIT
CAPACITÉ DE LEVAGE DE 327 À 2767 kg
CAPACITÀ DI SOLLEVAMENTO TRA 327 E 2767 kg
CAPACIDAD DE ELEVACIÓN DE 327 A 2767 kg



CRANE OPERATION

KRANBETRIEB
GRUTAGE
FUNZIONAMENTO GRU
TRABAJOS DE GRÚA

15.2 M REACH, 220° BOOM TILT

15,2 m REICHWEITE, 220° AUSLEGERNEIGUNG
PORTÉE DE 15,2 m, INCLINAISON DE FLÈCHE DE 220°
LUNGHEZZA 15,2 m, INCLINAZIONE BRACCIO 220°
ALCANCE DE 15,2 m; INCLINACIÓN DE PLUMA DE 220°

TRAILER

WAGGELANHÄNGER
TRAIN ROUTIER
PRIMORCHIO
SEMIREMOLQUE



Available Options:

Lieferbare Wahlausrüstungen:

Options disponibles :

Opzioni disponibili:

Opciones disponibles:



Independent Front Suspension

- Unabhängige Vorderradaufhängung
- Suspension à montage central
- Sospensione anteriore indipendente
- Suspensión delantera independiente



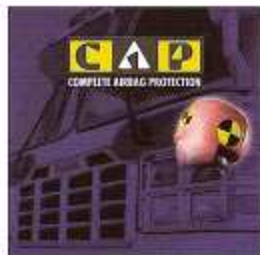
Midship Mounted Pumps

- Mittig montierte Pumpen
- Pompes montées en milieu de navire
- Pompe montate centralmente
- Bombas de montaje central



16" Industrial Nozzle

- 16 Zoll-Industriedüse
- Buse industrielle 16 po
- Ugello per uso industriale da 16 pollici
- Boquilla industrial de 16 pulg



Occupant Retention System

- Insassen-Rückhaltesystem
- Système de maintien d'occupant
- Sistema di ritenuta persone a bordo
- Sistema de retención del ocupante



Industrial Fire Pumps

- Industrielle Feuerlöschpumpen
- Pompes d'incendie industrielles
- Pompe antincendio industriali
- Bombas industriales contra incendio



A Revolutionary Firefighting Vehicle

www.strongarmfirefighting.com



Class A/B Foam Systems

- Schaumsysteme für Brandklassen A/B
- Systèmes à mousse classe A/B
- Impianti schiumogeni classe A/B
- Sistemas de espuma de clase A/B



10" Municipal Nozzle

- 10 Zoll-Kommunaldüse
- Buse municipale 10 po
- Ugello per uso civile da 10 pollici
- Boquilla municipal de 10 pulg

Custom Chassis Available:



Ferrara Fire Apparatus is a global supplier and manufacturer of emergency fire and rescue vehicles. Products include custom and commercial pumpers, tankers, rescue and Haz-Mat vehicles, aerial ladders and platforms, brush units and Homeland Security Response vehicles.



The 5th Man Nozzle and Firefighting head is a licensed product of Eagle Fire Equipment of Houston, Texas.



The Gradall brand is owned by JLG Industries Inc., a global leader in hydraulic boom technology, producing aerial work platforms, telehandlers, excavators and other products that are sold and supported worldwide.



Standart Bio Makina Ekipman İnşaat Sanayi ve Ticaret Ltd.Şti.
Fazılkeptanoğlu Cad. Seba İş Merkezi No:3 Kat:6 Seyrantepe
İstanbul / TURKEY
Phone : +90 212 325 75 11 Fax: +90 212 325 7161
e-mail : info@standartbio.com www.standartbio.com